

S-series

for three phase alternating current, 4 pole

RD31S-4D



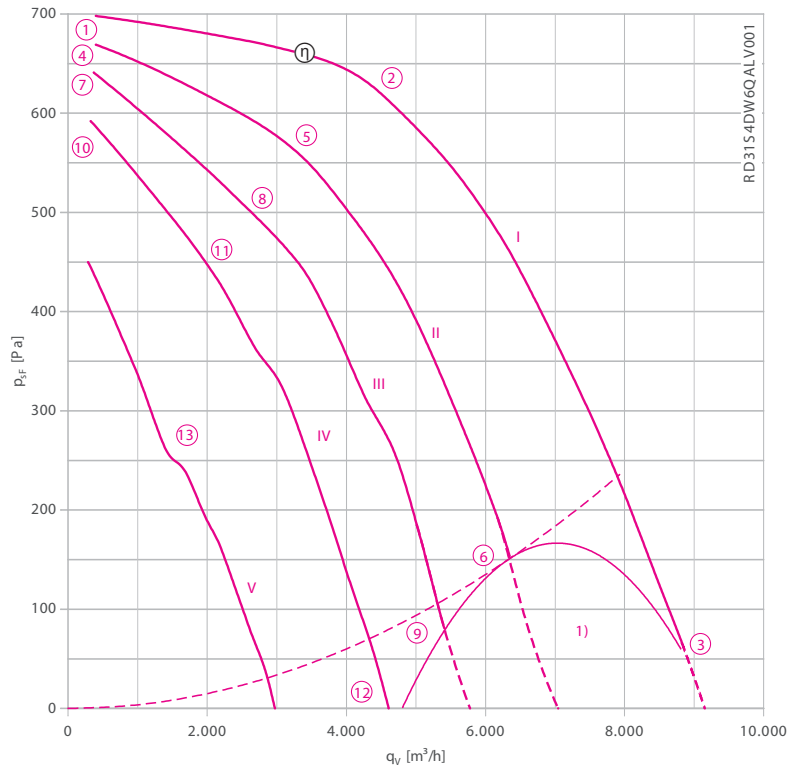
Description

Motor technology: AC
 Rated voltage U_N : 3~ 230/400 V (Δ/Y) ± 10 %*
 Rated frequency f_N : 50 Hz*
 Motor input power P_1 : 3.90 kW*
 Rated current I_N : 11.00/6.40 A*
 Rated speed n_N : 1300 min⁻¹*
 Starting current I_s : 50.00 A / 30.00 A
 Thermal class: THCL155*
 Min. permitted ambient temperature $t_{R(min)}$: -20 °C
 Max. permitted ambient temperature $t_{R(max)}$: 4 °C
 Minimum pressing $p_{sF(min)}$: 70 Pa
 Protection class: IP54
 Motor protection: thermal contact
 Impeller : Impeller made of galvanised sheet metal,
 Motor: 1 coat paint, pebble grey
 Conformity: ErP 2015, CE

ErP-data

Efficiency η_{statA} : 47.4 %
 Efficiency: $N_{actual} = 52.9 / N_{target} = 44$ **
 * Rated data
 **ErP 2015

Characteristic curve



Measured in housing from ZIEHL-ABEGG.

1) Do not operate in this area

- Connection diagram
- System components

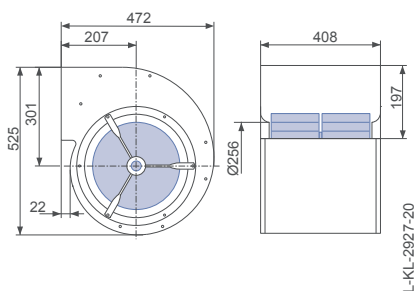
1360-106XB

Page 367

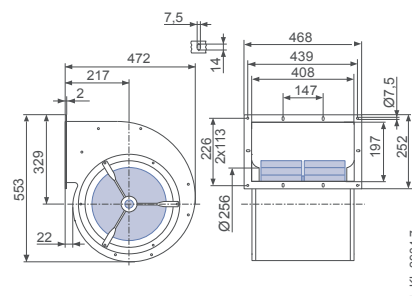
Page 262

Dimensions [mm]

Fan with housing, double inlet
without flange



Fan with housing, double inlet
with flange



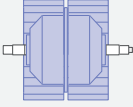


Performance data

Type	Characteristic curve	Voltage	Operating point	Current	Motor input power	Speed	Suction side sound power level
		U [V]		I [A]	P ₁ [W]	n [min ⁻¹]	L _{WAS} [dB]
RD31S-4DW.6Q.AL	I	400	①	2.70	570	1480	
		400	②	4.00	2100	1410	85
		400*	③	6.40*	3900*	1300*	91
	II	230	④	1.65	420	1450	
		230	⑤	3.30	1150	1320	81
		230	⑥	6.40	2300	1060	85
	III	180	⑦	1.60	390	1410	
		180	⑧	3.30	920	1250	78
		180	⑨	6.40	1750	880	81
	IV	140	⑩	1.70	360	1350	
		140	⑪	3.30	720	1160	76
		140	⑫	6.10	1250	650	78
	V	90	⑬	3.30	460	240	

*rated data

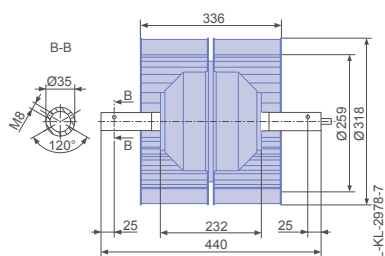
Fan ordering information

Design	RD (without flange)	RD (with flange)	RZ
Installation position	H	H	H
Electrical connection	Connecting cable axial 110 cm from axle end	Connecting cable axial 110 cm from axle end	Connecting cable axial 110 cm from axle end
			
Type	RD31S-4DW.6Q.AL	RD31S-4DW.6Q.AL	RZ31P-4DW.6Q.2L
Article no.	110235	121303	110106
Weight [kg]	40.20	41.10	30.60

Control technology

<p>Frequency inverter Fcontrol 3~</p>  <p>➤ Page 302</p>	<p>Motor protection units 3~</p>  <p>➤ Page 344</p>	<p>Transformer-based controllers 3~</p>  <p>➤ Page 334</p>	<p>Electronic voltage controllers 3~</p>  <p>➤ Page 324</p>
---	--	---	--

Motorised impeller



Used housing

